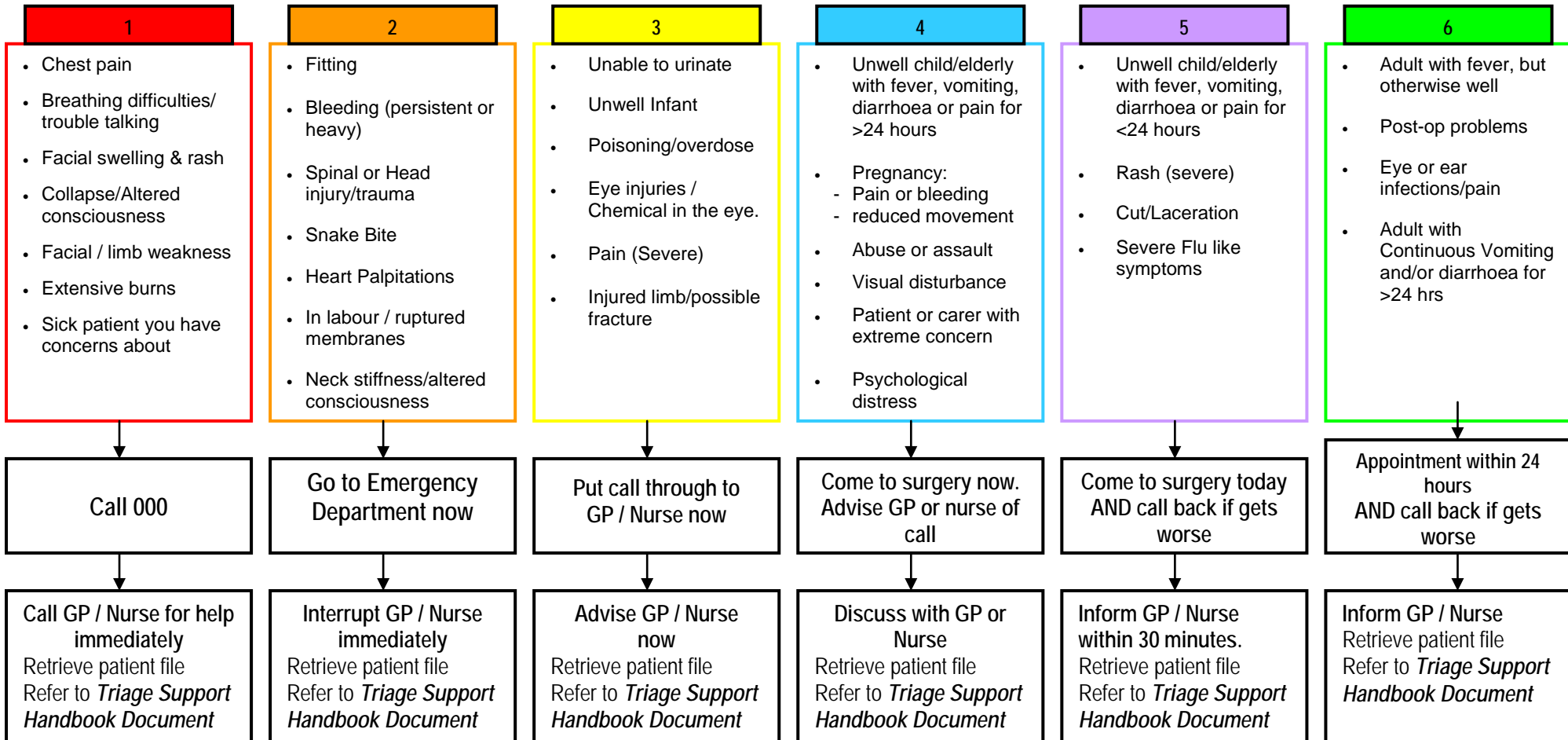
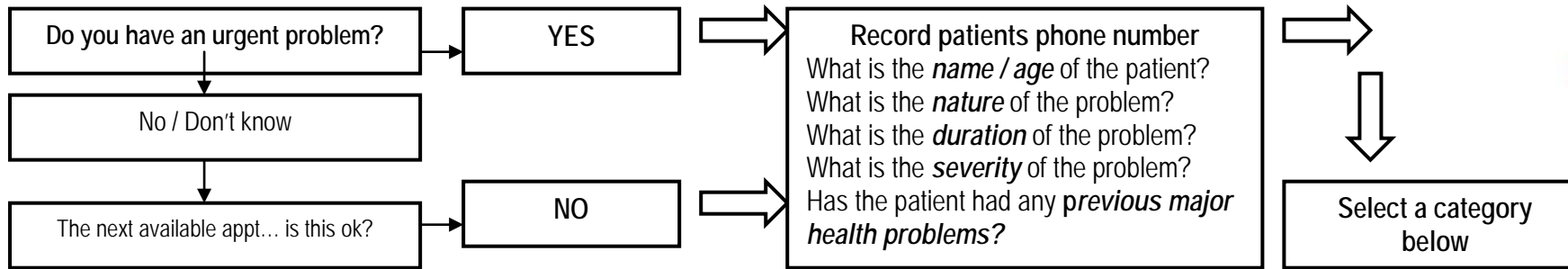


Triage: A Guide to Urgency for Non-clinical Staff in General Practice for Telephone and Walk-in Presentations

This guide must be used in conjunction with the Triage Support Handbook



Consider the following:

- Warning Bells! Past serious illness, Cancer, HIV / Cortisone, Litigation likely
- Consent for Ambulance / transfer of records
- Document times, names, category, advice
- Elevate category if in doubt
- Safety to drive.
- Pandemic plan implementation

Whilst every reasonable effort has been made to ensure that the information given in this resource is accurate, General Practice South will not accept liability for any injury, loss or damage arising directly or indirectly from any use of or reliance on this information